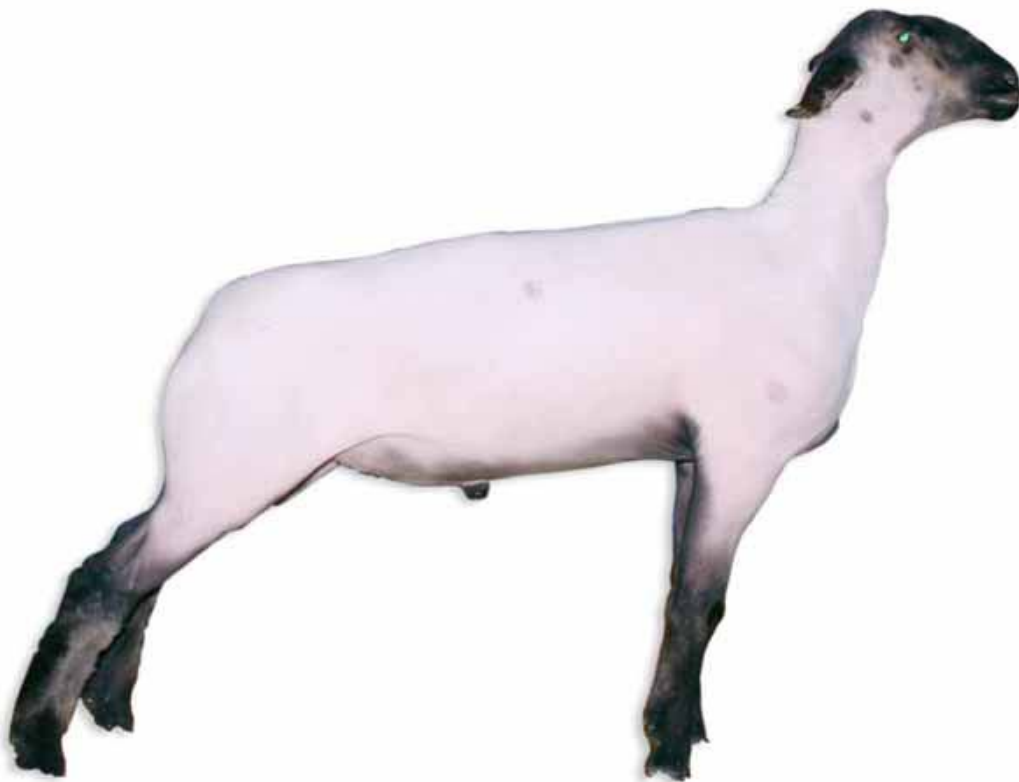
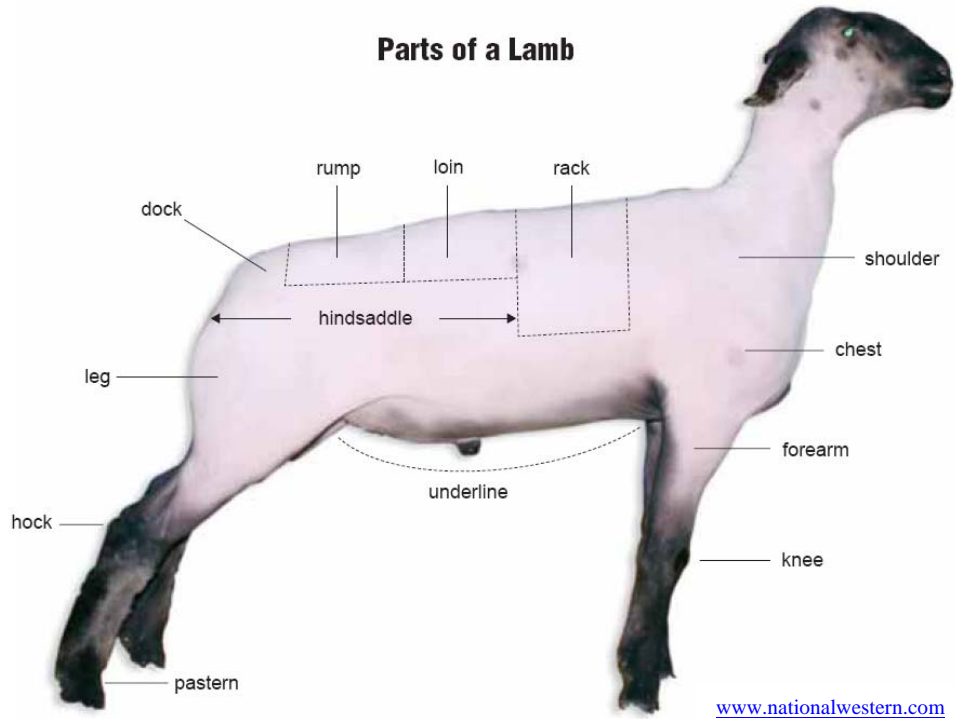


Iowa State University Sheep Judging Handout



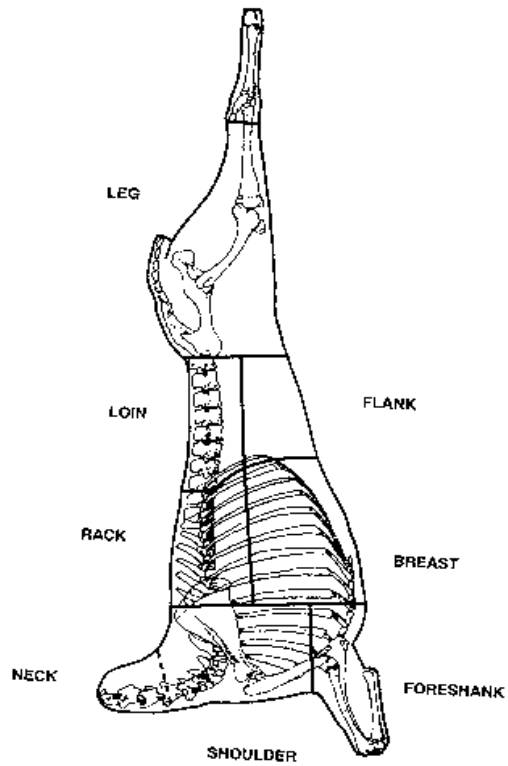
Jeff Thayne
ISU Livestock Judging Program

Parts of a Lamb



www.nationalwestern.com

Carcass- Wholesale Cuts

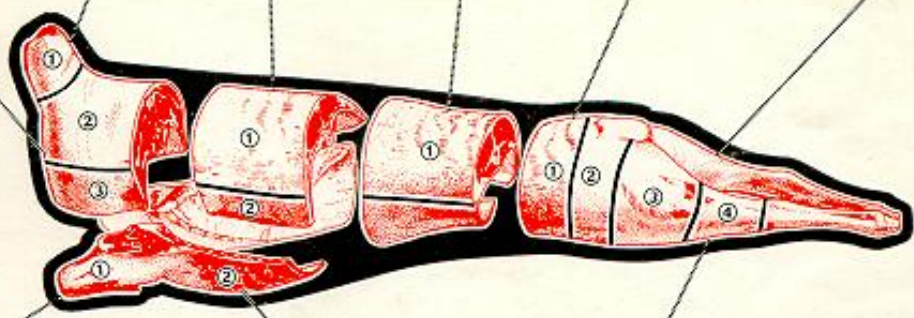


www.ansci.uiuc.edu

RETAIL CUTS OF LAMB

WHERE THEY COME FROM AND HOW TO COOK THEM

<p>SHOULDER</p> <p>① Cubes for Kabobe** —Broil—</p> <p>② Boneless Blade Chops (Saratoga)</p> <p>③ Blade Chop</p> <p>④ Boneless Shoulder</p> <p>⑤ Custom Shoulder</p> <p>⑥ Square Shoulder —Roast—</p>	<p>NECK</p> <p>① Neck Slices —Braise—</p>	<p>RIB</p> <p>① Frenched Rib Chops</p> <p>② Rib Chops —Broil, Panbroil, Pantry—</p> <p>③ Crown Roast</p> <p>④ Rib Roast —Roast—</p>	<p>LOIN</p> <p>① Loin Chops</p> <p>② Boneless Double Loin Chop —Broil, Panbroil, Pantry—</p> <p>③ Boneless Double Loin Roast</p> <p>④ Loin Roast —Roast—</p>	<p>SIRLOIN</p> <p>① Leg Center Slice (Steak) —Broil, Panbroil, Pantry—</p> <p>② Sirloin Chop —Broil, Panbroil, Pantry—</p> <p>③ Boneless Sirloin Roast</p> <p>④ Sirloin Roast —Roast—</p>	<p>LEG</p> <p>① Combination Leg</p> <p>② Center Leg</p> <p>③ Boneless Leg (Rolled)</p> <p>④ American-Style Leg</p> <p>① Sirloin Half of Leg</p> <p>② Shank Half of Leg</p> <p>③ French-Style Leg</p> <p>④ French-Style Leg, Sirloin Off —Roast—</p>
--	--	--	---	--	--



<p>FORE SHANK</p> <p>① Fore Shank —Braise, Cook in Liquid—</p>	<p>BREAST</p> <p>② Breast</p> <p>③ Rolled Breast</p> <p>④ Stuffed Breast —Roast—</p> <p>⑤ Riblets</p> <p>⑥ Boneless Riblets</p> <p>⑦ Spare ribs</p> <p>⑧ Stuffed Chops —Broil, Panbroil, Pantry—</p>	<p>HIND SHANK</p> <p>④ Hind Shank —Braise, Cook in Liquid—</p>	<p>GROUND OR CUBED LAMB*</p> <p>① (Large Pieces) Lamb for Stew* (Small Pieces)</p> <p>—Braise, Cook in Liquid—</p> <p>② Cubed Steak**</p> <p>③ Lamb Patties*</p> <p>④ Ground Lamb* —Roast (Bake)—</p>
---	---	---	--

* Lamb for stew or grinding may be made from any cut.
**Kabobs or cubed steaks may be made from any thick solid piece of boneless Lamb.

This chart approved by
National Live Stock and Meat Board

Market Lambs

- **Selection Emphasis**
 - **Muscle-** Round, expressive, defined
 - Forearm
 - Shoulder
 - Rack
 - Loin (Estimation is 2 X live weight divided by 100)
 - Leg
 - **Correctness of Finish**
 - Acceptable= range of .12” to .20”
 - Too Lean= Less than .10”
 - Too Fat= More than .25”
 - **Growth/Weight**
 - 100 to 140 pounds
 - **Skeletal Correctness**
 - Relatively straight in its lines and stands squarely and correct on its feet and legs
 - **Balance and Eye Appeal**
 - Overall attractiveness and symmetry the animal displays from profile

Breeding Sheep

- **Selection Emphasis**
 - **Growth/Weight**
 - Critical factor
 - Potential for future growth
 - **Functionality**
 - Skeletal Correctness- same as market lambs
 - Volume/Fleshing Ability
 - Depth, Width, Length, Ability to maintain condition
 - **Balance and Eye Appeal-** Similar to market lambs
 - **Muscle-** Similar to market lambs

Handling Market Lambs

“Stay off the class!” This is a common theme during a livestock judging contest. Inexperienced judges have a tendency to get too close to the animals and lose the “big picture” of the class. It is important to have a view that enables the judge to see all of the lambs at one time. This enables the evaluator to determine not only the strengths and weaknesses of each individual, but also to make a quick comparison of each animal to one another. Each lamb should be viewed from a three-quarter view, directly from behind, and directly in front. From a distant view, the judge will be able to make evaluations of growth, balance, and structural correctness. From the outside, an evaluator should have a complete set of notes regarding these traits before ever handling the lambs. As well, assumptions should be made regarding the carcass composition of lamb in terms of muscle and finish, and the length of each lamb’s hindsaddle. For muscle, visual indicators include the width of stance of the lamb, the dimension and definition the animal possesses down its top, and the shape and volume the lamb exhibits through its leg. Correctness of finish should also be evaluated from a distance. A trim lamb should be trim through its chest and middle, as well as show indentation behind its shoulder and be free of excess finish through its twist. Many contests will instruct the students to form a line and handle each lamb one by one, the other format allows students to handle the lambs in a random order. In either case, the evaluator needs to have notions of how each lamb *should* handle. For example, 1 *should or appears* to be the trimmest handling, longest loined lamb that is fresh over his loin; 2 *should* be the most powerful over his rack and loin, the longest hipped, and possess the biggest leg; etc. Therefore upon handle the judge should just keep the differences in mind. For example, 1 *is* the trimmest, measures the longest loin, but he fades to the edge of his loin, his lack of freshness is the only thing that the judge should have to remember in his/her mind for note-taking as the person moves to the next lamb.

1. The first step during the close inspection period of the class is to once again use your eyes. Before handling, it is important to analyze the lamb visual while making assumptions for finish, muscle, and length. You will be a more confident judge if your assumptions made visually correspond to assumptions made by touch.
 - a. Before handle, inspect for width and dimension, as well as shape of muscle over the rack of the lamb and the loin, the hip should be studied for width and squareness. Also make note of the shape of the lamb’s leg, the base width at the ground, and the squareness to which the lamb stands from hock to ground.
 - b. You should also inspect the lamb for finish differences. Trim lambs should exhibit indentation behind shoulder, and have shape and definition to their top. Fatter lambs tend to be wider and flatter in their top shape. Fatter lambs will be “boat” shaped from an aerial view.
2. Now you are ready to handle. Start directly behind the shoulder of the lamb, handle this area for the dimension and expression of the animal’s rack. Use one hand and allow the rack of the lamb to set in the area between your thumb and index finger. The rack shape should be square, and should feel firm and shapely to the touch. You should be able to get a read on muscle and freshness, as stale handling lambs will be more pronounced in their spine. Continue, using one hand and touch back over the middle of the lamb’s back and over its loin. This

should provide you the ability to make a call on the animal's dimension of top, its expressiveness, and the freshness or staleness of the lamb.

3. You should now return to the area behind the shoulder and begin to handle the lamb for finish. Keep your thumbs together and position them directly above the spine. Now, use the tips of your fingers to measure differences in fat thickness over the ribs of the lamb. It is important to keep your fingers together and to gently rub the lamb. Make sure to handle each lamb for finish in the same location and the same degree of pressure.
4. Next, you will measure the length of the lamb's hindsaddle. This will be a two step process. The first measurement will be the length of loin. Using your middle fingers, find the last rib on each side of the lamb. Then stretch your hand back to the hook bone and place your thumbs at that position. The length of the loin should be the measurement from your middle finger to your thumb. Now, to measure the length of hip, replace your thumbs with your middle fingers at the hook bone. Place your thumbs over the pin bone. This measurement should allow you to evaluate length of hip, levelness of hip, and squareness of hip.
5. The final step is the measurement of the circumference and shape of leg. You will stand near the rear skeleton of the lamb. Whatever side of the lamb you are on; the leg on the opposite side is the one to be measured. Lean over the lamb, position your hands on either side of the leg. You should have your middle fingers touching each other on the inner portion of the lamb's leg and wrap your thumbs around the leg to measure circumference. Also, move your hands toward the hock to evaluate if the leg shape tapers.

During the handling procedure it is imperative that judges handle each lamb in a methodical, accurate, and precise manner each time to ensure a proper evaluation of each lamb's strengths and weaknesses.

Market Lamb Terminology

Muscle

- Heavier muscled
- More muscular
- More powerfully made
- Stouter Constructed
- More powerful forearm
- More expressive over his rack
- More defined in his top shape
- Spans a thicker loin carries this thickness back to a squarer fuller dock and deeper tying leg
- Deeper and fuller across a wider loin
- More muscle expression over his rack and loin
- Bolder in his rack shape
- Progressively thickens from rack to dock
- Had more width and depth of loin
- Came squarer and fuller out of hip
- Handles with more plumpness to his leg
- Met my hand with more plumpness and fullness of leg
- Thicker through his stifle and lower leg
- Measures with more circumference of leg
- More powerfully muscled through his leg
- Deeper tying leg
- More volume of leg

Carcass Terms

- Go to the rail with a leaner, higher cutability carcass
- Go to the rail opening a larger eye
- Go to the rail with more total pounds of product
- Rail a carcass with a more desirable yield grade
- *Go to the rail with the fattest, lowest cutability carcass*

Correctness of finish

- To the touch
- Leaner, firmer handling lamb
- Trimmer handling
- Fresher handling
- More correctly finished
- Firmer over top with less finish over rib
- Appears trimmer through his breast and middle and handles accordingly
- Handled with less fat over his rack and loin
- Trimmer middled
- Trimmer through his breast and fore-rib
- Cleaner, trimmer breasted
- *Fattest, softest handling*
- *Staler down his top*

Growth/Balance and Eye Appeal

- Heavier weight

- Pounds heavier
- Growthier
- Taller fronted
- Longer necked
- Leveler down his top and out of his dock
- Longer bodied, longer hindsaddled
- Measures with more length from his last rib back
- Nicer balanced
- More symmetrical
- Smoother shouldered
- Straighter lined
- More stylish
- More extended
- Neck blends smoother into shoulder
- Lays in neater and tighter in shoulder
- Laid in smoother from neck to shoulder
- Stronger topped
- Squarer hipped
- Longer and leveler out his dock

Skeletal correctness

- More structurally correct
- Heavier structured
- Stands on more substance of bone
- Stronger pasterns
- More correct in the set of his legs
- More correct on his feet and pasterns
- Stood sounder and stronger on his pasterns
- Longer striding
- Easier moving
- Wider tracking

Breeding Sheep Terminology

Growth/Performance

- Higher performing
- Appeared to have a higher weight per day of age
- Potential for future growth
- More upstanding
- Larger statured
- Larger statured, more upstanding ewe that has more evidence of future growth
- Larger framed

Volume/Fleshing Ability

- Broodier appearing
- Deeper bodied
- Higher volumed
- More capacious
- More depth and spring of rib
- More productive appearing
- Bolder spring to fore and rear rib

Market Lamb Reasons

I placed the market lambs 1-2-3-4. I easily started 1, he is the most powerfully made, most extended lamb.

In my top pair, I preferred the stouter constructed, heavier weight 1 over the more attractive 2. The Suffolk appearing lamb is heavier muscled with more natural thickness over his rack and down his top. Compositionally, 1 is leaner and firmer handling over his ribs. Plus, 1 is a growthier lamb that measures with more length from his last rib back. From a carcass standpoint, 1 should rail more total pounds of product. I admit that 2 is a more eye appealing lamb the blends smoother in neck-shoulder junction and is leveler out his hip. However, 2 is a lighter weight lamb that handles softer over his fore-rib, so he's second.

Even so, in my middle pair 2 is more powerfully made and more correctly balanced. The wool capped wether progressively thickens from rack to dock, comes squarer and fuller out of his hip, and measures with more circumference of leg. To the touch, 2 handles fresher and more desirable in his degree of finish. From the profile, 2 is a longer necked, taller fronted lamb that lays in neater and tighter in his shoulder. Terminally, 2 should rail a carcass with a larger eye. I recognize that 3 offers more spring and shape of rib, but he is a short bodied, poorer balanced lamb.

Despite this, 3 is more product oriented in my final pair. 3 spans more shape and expression of muscle down his top and is thicker through the center and lower leg. Also, 3 is a more productive appearing lamb the offers more with to his chest and a bolder rib shape. Structurally, 3 stands squarer and more correctly from hock to ground. When send to the rail 3's advantage in muscle indicates a more shapely carcass. I appreciate the tighter hided lamb for his levelness of top and hip, but he is the narrowest, lightest muscled, fattest lamb which should rail the lowest cutability carcass.

Thank you

Market Lamb Reasons

I placed the market lambs 4-1-2-3. In a top pair of carcass driven wethers I opted for the handle and power of 4. 4 is built with the most dimension from the ground up, he is the widest chested, and freshest handling. He handles the boldest in his rack, widest and deepest across his loin, and has the most shape to his lower leg. I expect him to open the largest eye, if ribbed. Yes, 1 is more extended through his front one third, smoother shouldered and leveler down his top. However he is plainer in his rack and fades to the edge of his loin, so I placed him second.

Nonetheless in my intermediate pair I chose the quality found in 1 and placed him over 2. 1 is the most attractive from the profile, he ties the longest neck into the smoothest shoulder, is the strongest down his to and the levellest out of his hip. Additionally he handles with more tone down his top, is fresher across his loin, and has more shape to his leg. I'd expect him to rail a shapelier carcass. I realize 2 is a heavy weight, stouter boned wether. Despite this, he is poorer balanced, he is lower in his neck attachment and weaker topped. Plus he is narrower loined and flattens through his lower leg.

Even so in my final comparison I opted for 2's ability to rail more total pounds of product and placed him over 3. 2 is a wider constructed wether that spans more dimension of muscle across his rack, maintains this advantage out his hip and through his leg. I appreciate that 3 is taller fronted and cleaner chested, but the pounds light wether is the narrowest based, the frailest structured and the stalest handling, so I placed him fourth.

Thank you

Logan Wallace

2007 ISU Livestock Judging Team

Market Lamb Reasons

My placing of the market lambs is 4-1-2-3. In my initial comparison, I easily started with four from a muscle and profile standpoint. He simply excelled the class as he was the boldest raked wether that was the most impressive from his last rib back as he spanned with the widest, longest loin was the stoutest through his hip and maintained this into the most volume of leg, so I would expect him to go to the rail with the advantage in percent hindsaddle and cut with the highest conformation score. This is further complimented by the fact that he is also the most stylish lamb in the class. He ties the longest neck the highest into the top of his shoulder and maintained this into the longest topline and levellest dock. I appreciate the fact that 1 is another long fronted wide structured wether, nevertheless he is short bodied and steep out of his dock.

In my middle decision, I opted for the silver wether due to his added width and muscle. He excels 2 from the ground up as he is wider in his base, fuller through the inner and outer portions of his leg, and on his topside he his thicker through his hip. Due to these advantages he should go to the rail and hang with more total retail product. On the other hand, 2 is a more upstanding lamb. Unfortunately, his disadvantages lie in the fact that he is the beginning of a bottom pair of wethers that are steep docked, flat through their leg, and narrow made.

Despite this criticism, in my final comparison I chose the larger framed longer sided wether. 2 is a bigger outlined, longer patterned individual that is taller fronted and possesses more length from his shoulder back. I did not fail to recognize that 3 is another long necked wether, but this fails to compensate for the fact that he is the frailest boned, lightest muscled wether that is the poorest balanced of any in the class.

Sarah Gregory

2003 Iowa State University Livestock Judging Team

Mount Auburn, Illinois

Market Lamb Reasons

I placed the market lambs 1-3-2-4. In a top pair of carcass oriented lambs that offer trade off's, I started the class with the most youthful, heaviest muscled. The blue lamb is the trimmest patterned and handles with the most freshness and expression. He offers the most dimension and length to his loin, while being the stoutest hipped and widest pinned. Carcass wise I should expect his to rail with the largest eye. Sure, 3 is more powerfully muscled and offers more dimension to his rack. However, when compared to my class winner, the lamb with evidence of fungus doesn't have as much shape to his leg and fades to the edge of his loin. So he's second.

Even so in my intermediate decision I preferred the more product driven whether found in 3 over 2. He is fresher handling, and squares up with more dimension and shape to his top while being trimmer patterned. Terminally speaking I would expect him to rail a higher cutability carcass. Now I agree the 2 is heavier structured. Yet of my initial three he is the softest handling, flattest ribbed lamb, who's the deepest chested and the steepest out of his hip.

In my final decision it is 2's ability to go to the rail with more total pounds of retail product that places him over 4. He is more extended thru his front end and handles with more shape and dimension to his top. Now I have to appreciate 4 for being stout boned and offering some shape to his leg. However he is the lightest weight, plainest featured whether and is the narrowest. So he's last.

Thank you

Cassi Greiman

2007 ISU Livestock Judging Team

Breeding Ewe Reasons

I placed the Hampshire Ewes 3-4-2-1. I started the highest performing, broodiest appearing ewe in a top pair of more structurally correct females.

3 is the growthiest ewe who appears to have offered the most weight per day of age. Plus, she offers the most productivity through her chest and rib. Specifically, she is the boldest and deepest through her center body and appears to offer more fleshing ability. As well, the ewe most prominent in her wool cap is the stoutest featured and heaviest muscled. I admit that 4 is a more attractive, feminine appearing ewe that is cleaner breasted. However, the ewe who needs to exhibit more Hampshire breed character is frailer featured and narrower based.

Even so, in my middle pair of ewes who offer more look from profile, it is 4's added soundness that places her over 2. 4 is more correct on her feet and legs, particularly, displaying a more correct angle to her shoulder and knee, and have a more ideal set to her pastern. In addition, she is the more upstanding ewe who exhibits more natural muscle dimension and more outward curvature to her rib. I recognize that 2 is the most stylish ewe from the side and is levellest in her dock set. But, she is the shallowest bodied, and is straighter through her knee and is tight in her pastern, so she's third.

Despite this, in a final pair of ewes that differ in their advantages, I preferred the potential growth and balance of 2 over 1. 2 is a taller fronted, later maturing female who from the side appears to offer more length of hindsaddle. The swirl pelted ewe blends a longer neck into a smoother shoulder and she is constructed the levellest out her hip. I credit 1 for being a deep ribbed, heavy structured ewe, but she is the earliest maturing, poorest balanced ewe, who offers the least performance.

Thank you

Breeding Ewe Reasons

I placed the commercial ewes 4312. In my initial pair of nicer balanced females, I preferred the added substance found in 4. More specifically, she is the broodiest appearing, boldest sprung ewe that posses the most dimension to her upper skeleton, while being stronger topped and leveler out of her dock. Now, there is no question that 3 is slimmer necked and smoother shouldered; however, comparatively, she is shallower bodied and flatter hipped.

Nevertheless, in my intermediate pair, I easily opted for the more correctly patterned 3 over 1. She quite simply is a more feminine fronted ewe who blends neater into her shoulder, while being leveler and longer down her top, and at the same time, stands down squarer and truer on all four with more substance of bone. Now, I admit that 1 is the biggest outlined, most upstanding female, unfortunately she is the beginning of a bottom pair of poorer balanced ewes who are weak topped and steep hipped.

Even so, in my bottom comparison of brown headed ewes, it is a matter of size and extension that places 1 over 2. She undoubtedly is a larger patterned ewe who stands taller at her shoulder. Furthermore, she is more extended through her front end and profiles with more length of spine and hip. Now, I did not fail to realize that 2 is cleaner breasted; however, I like her fourth as she is the shortest coupled, lightest muscled ewe that is the frailest boned of any in the class.

Matt Schneider

2004 Iowa State University Livestock Judging Team

Lone Tree, Iowa

Breeding Ewe Reasons

My preferred alignment of the Performance Hampshire Ewes is 3-4-1-2. I sorted to a logical class winner as she quite simply puts the most substance on the largest frame. In further detail, the short-eared ewe is naturally the widest gauged, offers the most capacious shape to her rib, and is the most dimensional down her top. Plus, she combines these functional attributes, while being more extended about her front end and longer spined. Now, I did not fail to realize that the dark fibered ewe is smoother about her shoulder, but she simply cannot match the growth and substance when compared to my class winner, so I like her second.

Now in a middle pair of ewes who differ in their advantages, I knowingly sacrificed the added growth and extension of 1, for the stouter featured, more correctly balanced 4. To build on this, 4 is wider based, bolder ribbed, and more massive down her top. But, perhaps what I appreciate about her most is that she is especially more striking from a profile. She certainly ties her neck in higher at the point of her shoulder, is more elevated about her chest floor, while being more parallel in her lines, with an especially deeper flank. Collectively, I'd expect her heavier muscled, more eye-appealing club lambs to experience more success in the show ring. Sure, the ewe with the fullest wool cap is larger framed and more extended about her bone work, but unfortunately, it is an issue of substance that runs her third. Of the initial three, she is the narrowest gauged and the shallowest bodied.

Surprisingly, I still opted for 1 in my concluding pair as she should be more useful with her kind. She is a larger outline ewe who is taller at the point of her shoulder and longer bodied, while being marginally wider made. Plus, I'd expect her to inject more growth into future generations. I realize 2 is more youthful in her appearance, but this does not compensate for the fact that the slowest growing ewe is clearly the smallest framed, narrowest based, and flattest sided ewe, thus offering the least brood ewe potential of any in the class.

Anne Bjerum

2006 Iowa State University Livestock Judging Team

Mountain Lake, MN